



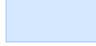







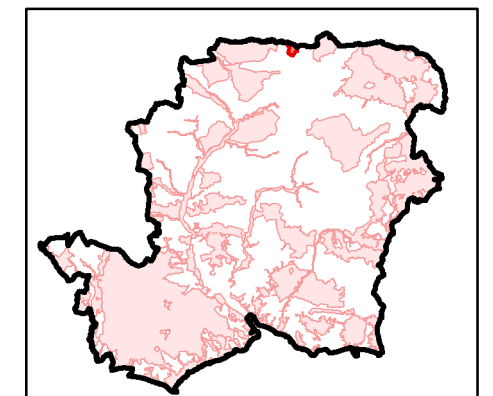
Hampshire Biodiversity Information Centre

BOA 14: Ashford Hill (Hants)

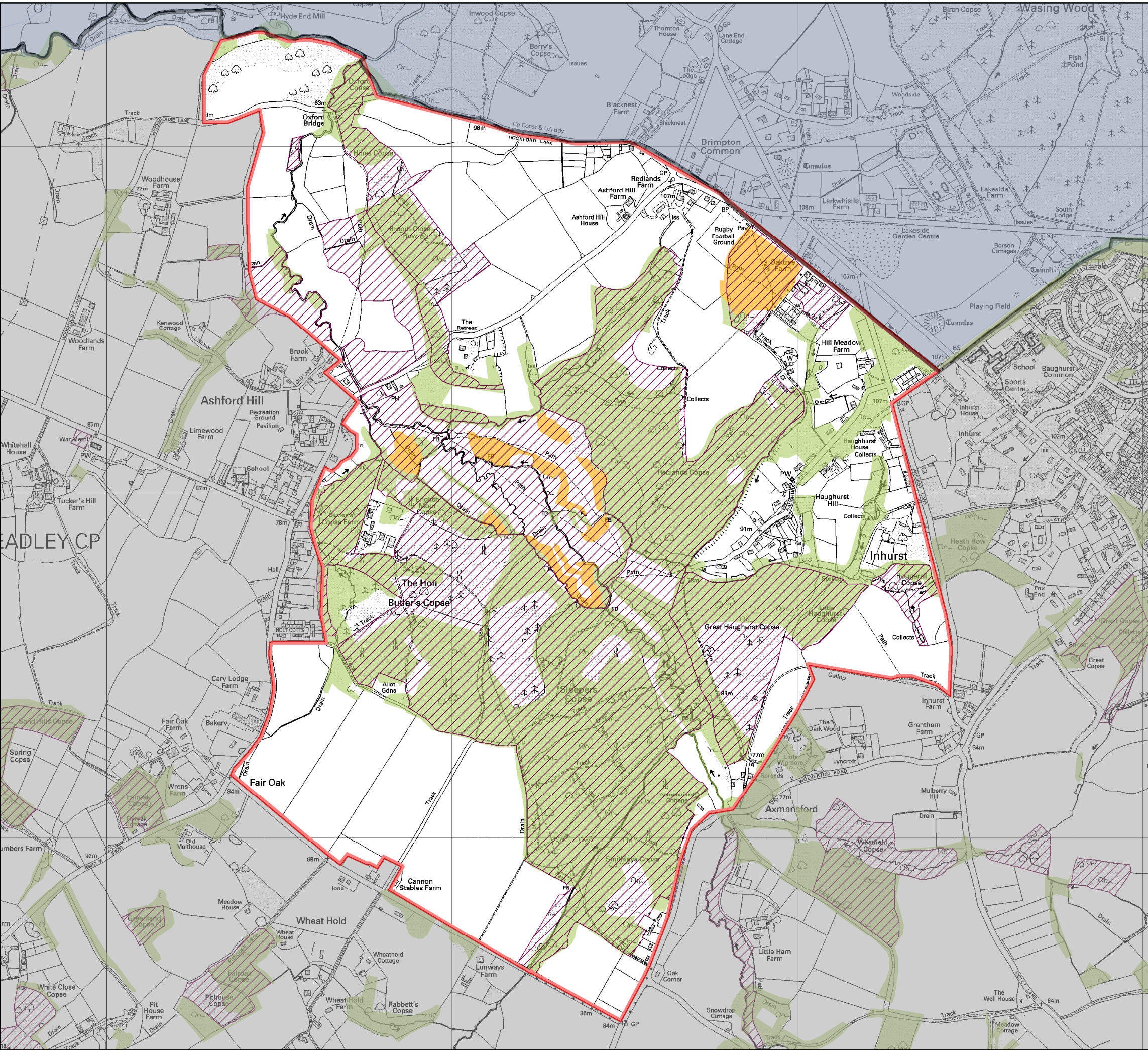
BAP Habitats & Designated Sites

Key to map:

-  BOA Boundary
-  Other BOA Boundaries (Hampshire)
-  Other BOA Boundaries (Non-Hampshire)
-  Area outside this BOA
-  Hampshire County Boundary
-  Designated Sites
-  BAP priority habitats Non Woodland
-  BAP priority Habitat Woodland



This map is reproduced from Ordnance Survey material with the permission of Ordnance Survey on behalf of the Controller of Her Majesty's Stationery Office © Crown copyright. Unauthorised reproduction infringes Crown copyright and may lead to prosecution or civil proceedings. HCC 100019180 2010



Scale @ A3 1:11,000

April 2010