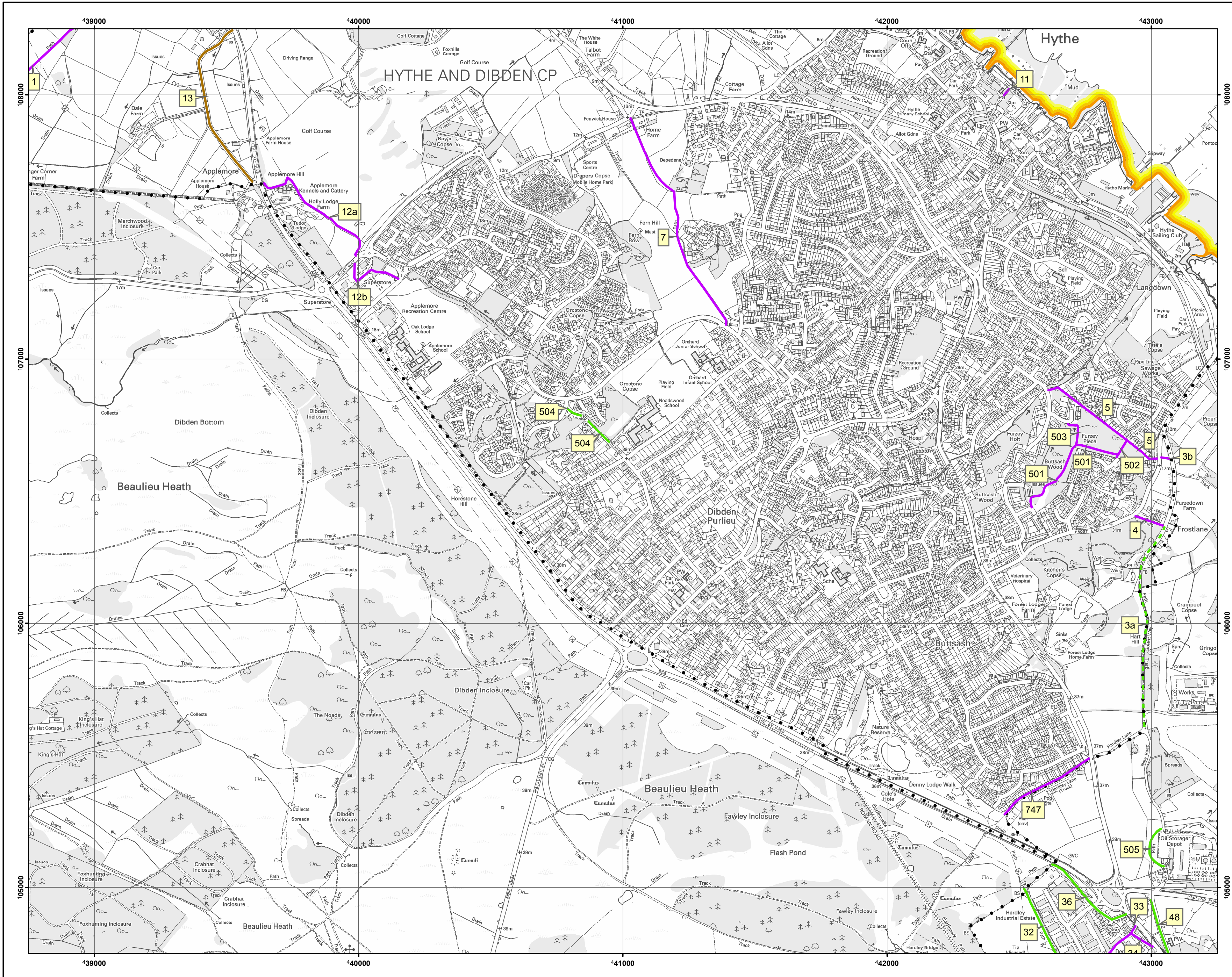


**THE HAMPSHIRE COUNTY COUNCIL (s.57(3) WILDLIFE AND COUNTRYSIDE ACT 1981)
DEFINITIVE MAP OF PUBLIC RIGHTS OF WAY 2010**

This sheet was reprinted on 1 January 2011 to take account of an order, or orders, confirmed after the publication of the 2008 definitive map.



Given this day of
The Common Seal of Hampshire County Council was hereunto affixed in the presence of:-

.....
Authorised Signatory

Map Scale 1:10,000



- Legend**
- Footpath
 - Bridleway
 - Restricted Byway
 - Byway Open to All Traffic
 - Parish Boundary
 - County Boundary

Public Rights of Way are not shown over any areas shaded in grey on the map below, as these are outside the administrative boundary of Hampshire County Council



Index to adjoining maps

09.07	10.07	11.07
09.06	10.06	11.06
09.05	10.05	11.05

Map Number
10.06

This map is reproduced from Ordnance Survey material with the permission of Ordnance Survey on behalf of the Controller of Her Majesty's Stationery Office © Crown copyright. Unauthorised reproduction infringes Crown copyright and may lead to prosecution or civil proceedings. HCC 100019180 2011