



# The Three Ponds Walk

Approx. 5km

**The Three Ponds Walk visits each of the three major ponds on Yateley Common -The Gravel Pit Pond, Wyndham's Pool and Stroud Pond.**

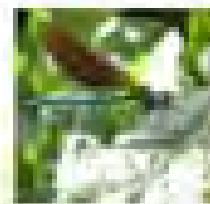
This route follows footpaths and Bridleways across the Common which may become muddy during wet periods. Please wear suitable footwear, as tracks may be uneven.

Wyndham's Pool is a man-made pond, which is believed to have originated as a fish pond. In the early twentieth century it was used as a bathing pool. Today it is used for recreational fishing.

Look out for the Grey Heron -a regular visitor to the pond. And a variety of Dragon and Damselflies.

Stroud Pond, is full of invertebrate, and is used as an educational resource for pond dipping. This is a pleasant spot to sit by the waters edge.

Start from the Gravel Pit Car park off the A30



The Gravel Pit Pond was created when material was quarried to build the A30. The area is popular with birds making the grassy area an ideal spot to stop for a picnic.

For further information, please contact:  
northern.sites@hants.gov.uk  
01252 870425  
[www.hants.gov.uk/yateley-country-park](http://www.hants.gov.uk/yateley-country-park)