

**THE HAMPSHIRE (EASTLEIGH BOROUGH NO. 5)  
(PARISH OF HEDGE END - PART OF BRIDLEWAY 6c)  
PUBLIC PATH EXTINGUISHMENT AND DEFINITIVE MAP  
AND STATEMENT MODIFICATION ORDER 2020**

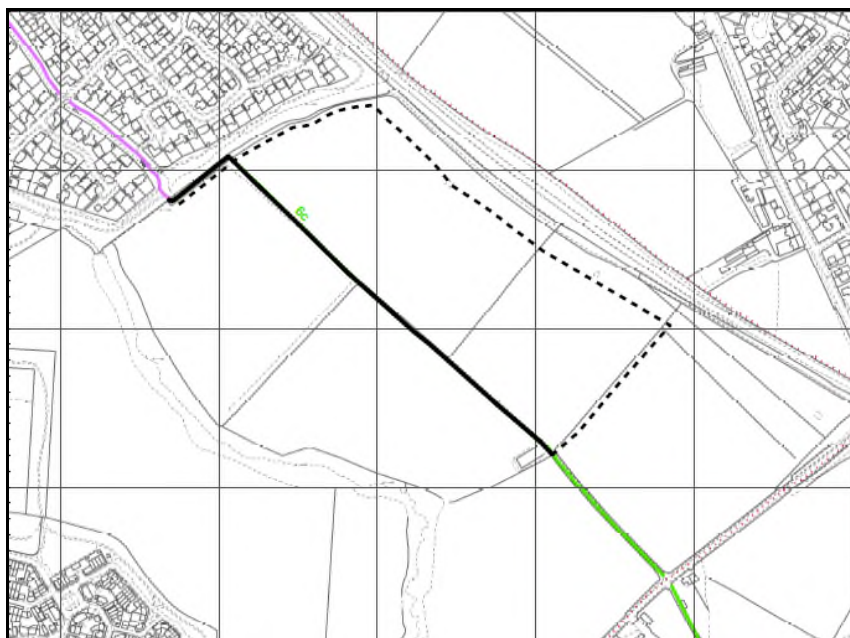
**EXPLANATORY STATEMENT**

(This statement does not form part of the Order)

This Order, if confirmed, will extinguish that part of the public bridleway (known as Hedge End Bridleway 6c) shown by a solid black line on the Order map. The route runs through land on which planning consent has been granted for a major new development in Hedge End. The site in question is located west of Woodhouse Lane, and will provide a new seven form entry secondary school, 605 new homes, public open space, and a new local centre.

This Order has been made under the provisions of Section 258(1) of the Town and Country Planning Act 1990. Section 258 of the 1990 Act provides for a public right of way to be extinguished if it runs over land that has been acquired or appropriated for planning purposes by a local authority (and is still held by the authority for those purposes) and if the authority is satisfied that an alternative right of way has been (or will be) provided, or that the provision of an alternative right of way is not required.

The land through which Bridleway 6c runs has been appropriated for planning purposes by Hampshire County Council, and following the extinguishment an alternative bridleway will be provided around the perimeter of the site, the indicative route of which is shown by a broken black line on the plan below. The route of the proposed bridleway has been consulted upon and agreed with local user groups, and the County Council has undertaken to provide the route through a legal agreement with Eastleigh Borough Council (in its capacity as the local planning authority) under Section 106 of the 1990 Act.



Anyone who wishes to object to this Order has a statutory right to do so. Any objections, that cannot be resolved will be referred to the Secretary of State for the Environment, Food and Rural Affairs, who will appoint an independent Inspector to determine whether the Order should be confirmed. To be relevant to the tests set out in the legislation, any objection must address the matters highlighted in the second paragraph above. The merits of any development or planning permission (or whether it has been granted) are not legally relevant to the determination of this Order.

Objections or representations must be sent in writing to: Countryside Access Team, Castle Avenue, Winchester, SO23 8UL or by email to [row.notices@hants.gov.uk](mailto:row.notices@hants.gov.uk).

**NOTICE OF PUBLIC PATH ORDER**

**TOWN AND COUNTRY PLANNING ACT 1990, SECTION 258(1)  
AND PARAGRAPH 1 OF SCHEDULE 14  
WILDLIFE AND COUNTRYSIDE ACT 1981**

**HAMPSHIRE COUNTY COUNCIL**

**THE HAMPSHIRE (EASTLEIGH BOROUGH NO. 5)  
(PARISH OF HEDGE END - PART OF BRIDLEWAY 6c)  
PUBLIC PATH EXTINGUISHMENT AND DEFINITIVE MAP AND STATEMENT  
MODIFICATION ORDER 2020**

---

The above named Order, made on 9 November 2020 under Section 258(1) of the Town and Country Planning Act 1990, will stop up that part of Hedge End Bridleway 6c running from a point approximately 150 metres north-east of the eastern extent of Bushy Copse at SU 5042 1404, to a junction with Hedge End Footpath 6b at SU 4994 1437.

A copy of the Order and Order map can be viewed online at [www.hants.gov.uk/publicnotices](http://www.hants.gov.uk/publicnotices). Printed copies can be obtained by emailing [row.notices@hants.gov.uk](mailto:row.notices@hants.gov.uk).

Any representations about or objections to the Order may be sent in writing to the Head of Countryside Access, Hampshire County Council, Castle Avenue, Winchester, SO23 8UL, or via e-mail to [row.notices@hants.gov.uk](mailto:row.notices@hants.gov.uk) quoting reference:- PPO/5146 no later than 11 December 2020. Please state the grounds on which they are made.

If no such representations or objections are duly made, or if any so made are withdrawn, Hampshire County Council may confirm the Order as an unopposed order. If the Order is sent to the Secretary of State for Environment, Food and Rural Affairs for confirmation any representations and objections which have not been withdrawn will be sent with the Order.

Persons wishing to make representations or objections are advised that in the Order making process, representations or objections may become publicly available and therefore the names and address of those persons making representations or objections would also be made publicly available.

The personal data you provide in any representation will be treated in accordance with Data Protection Legislation, and may be published in a decision report, be disclosed to other interested parties, including the landowner (or their representatives). It may also be made public if the matter is referred to the Planning Inspectorate. Your data will be retained for a maximum period of two years from the date that the application is resolved. The legal basis for our use of this information is the compliance with a legal obligation – Town and Country Planning Act 1990.

You have some legal rights in respect of the personal information we collect from you. Please see our website Data Protection page for further details: [www.hants.gov.uk/dataprotection](http://www.hants.gov.uk/dataprotection). You can contact the County Council's Data Protection Officer at [data.protection@hants.gov.uk](mailto:data.protection@hants.gov.uk). If you have a concern about the way we are collecting or using your personal data, you should raise your concern with us in the first instance or directly to the Information Commissioner's Office at <https://ico.org.uk/concerns>.

DATED this 13<sup>th</sup> day of November 2020

FELICITY ROE, Director of Culture, Communities and Business Services, The Castle, Winchester, SO23 8UJ

TOWN AND COUNTRY PLANNING ACT 1990. SECTION 258(1)  
WILDLIFE & COUNTRYSIDE ACT 1981

HAMPSHIRE COUNTY COUNCIL

THE HAMPSHIRE (EASTLEIGH BOROUGH NO. 5)  
(PARISH OF HEDGE END – PART OF BRIDLEWAY 6c)  
PUBLIC PATH EXTINGUISHMENT AND DEFINITIVE MAP AND STATEMENT  
MODIFICATION ORDER 2020

---

This Order is made by Hampshire County Council (“the authority”) under Section 258(1) of the Town and Country Planning Act 1990 (“the 1990 Act”) which:

- a) Has appropriated for planning purposes the land described in the Schedule to this Order (‘the Schedule’) which is subject to the public bridleway to which this Order relates and such land is held by the authority for the purposes for which it was appropriated; and,
- b) is satisfied that an alternative bridleway will be provided.

This order is also made under section 53A(2) of the Wildlife and Countryside Act 1981 (“the 1981 Act”) because it appears to the authority that the Hampshire Definitive Map and Statement of Public Rights of Way (dated 15<sup>th</sup> December 2007) require modification in consequence of the occurrence of an event specified in section 53(a)(i) of the 1981 Act, namely, the stopping up (as authorised by this order) of a highway hitherto shown or required to be shown in the map and statement.

**BY THIS ORDER** that part of the public right of way over the land, as shown by a bold black line on the map contained in this Order and described in the Schedule to this Order shall be extinguished on the confirmation of this Order, and thereupon the Hampshire Definitive Map and Statement of Public Rights of Way (dated 15<sup>th</sup> December 2007) shall be modified by deleting from it that public right of way, and the definitive statement shall be modified as described in the Schedule to this order.

GIVEN this 9<sup>th</sup> day of November 2020

THE COMMON SEAL of HAMPSHIRE )  
COUNTY COUNCIL was hereunto )  
affixed in the presence of:- )

Authorised Signatory

*A F Barnes*



37/6049

## **SCHEDULE**

### **PART 1**

#### **Description of site of path or way extinguished**

##### **Hedge End Bridleway 6c**

From SU 5042 1404 to SU 4994 1437

Commencing at a point approximately 150 metres north-east of the eastern extent of Bushy Copse at SU 5042 1404, and proceeding in a north-westerly direction along field boundaries for approximately 550 metres, then continuing in a south-westerly direction for 90 metres to meet Hedge End Footpath 6b at SU 4994 1437, as shown between points A and B on the accompanying map.

An approximate length of 640 metres

### **PART 2**

#### **Modification of Definitive Statement**

Variation of particulars of path or way

##### **Hedge End Bridleway 6c**

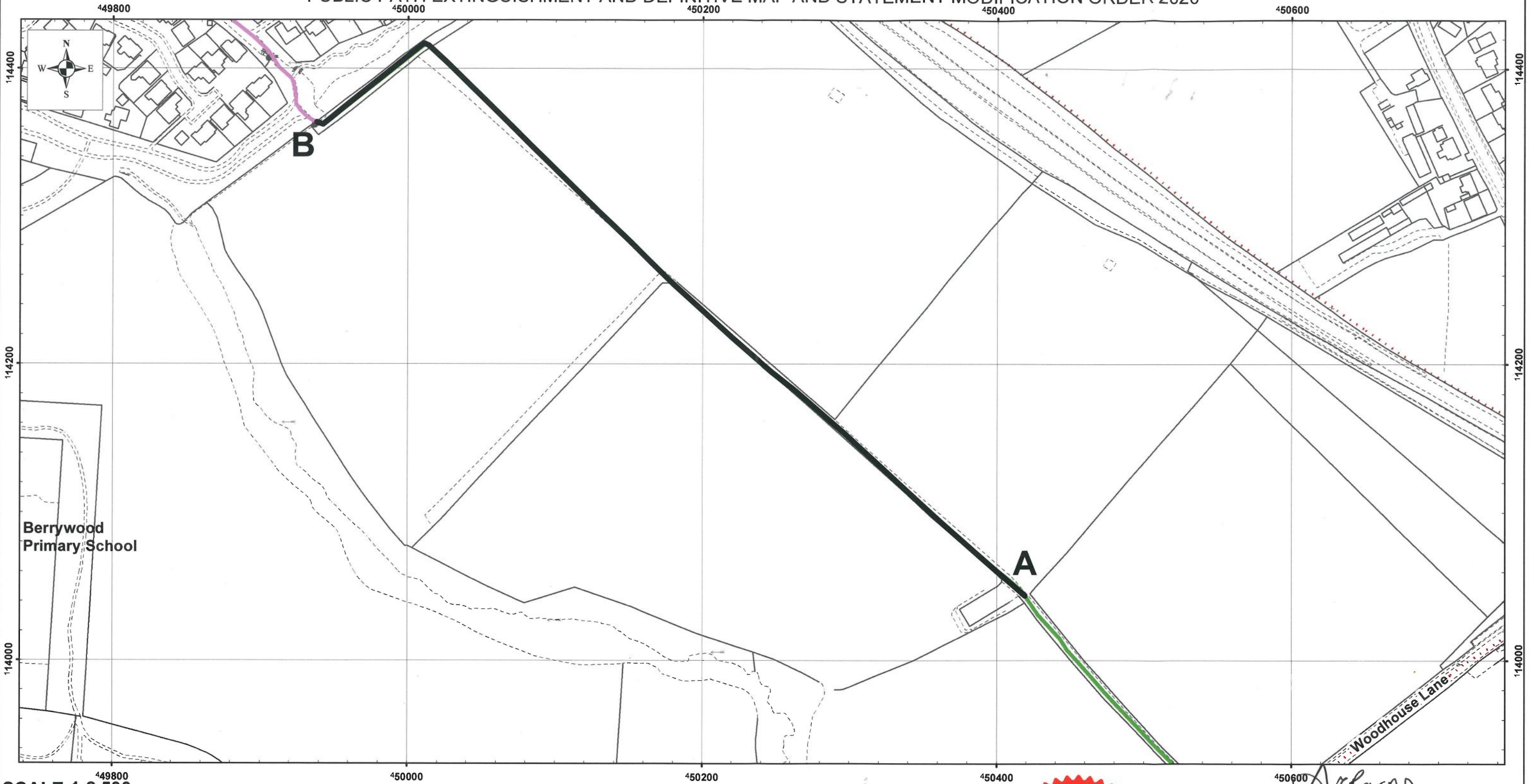
Add:

"That part of the path which ran between SU 5042 1404 to SU 4994 1437 has been extinguished."

# HAMPSHIRE COUNTY COUNCIL

MAP REFERRED TO IN  
THE HAMPSHIRE (EASTLEIGH BOROUGH NO. 5)  
(PARISH OF HEDGE END - PART OF BRIDLEWAY 6c)

PUBLIC PATH EXTINGUISHMENT AND DEFINITIVE MAP AND STATEMENT MODIFICATION ORDER 2020





SCALE 1:2,500

## LEGEND

BRIDLEWAY TO BE STOPPED UP:- 

EXISTING BRIDLEWAY TO BE RETAINED:- 

PUBLIC FOOTPATH :- 

PARISH BOUNDARY:- 

MAP No.474 PRODUCED FROM DIGITAL DATA  
SUPPLIED BY ORDNANCE SURVEY

THE COMMON SEAL OF HAMPSHIRE COUNTY  
COUNCIL WAS HEREUNTO AFFIXED IN THE  
PRESENCE OF:-

.....  
AUTHORISED  
SIGNATORY

DATE 9<sup>th</sup> November 2020



37/6049

.....  
REPRODUCED FROM THE O.S. MAPPING  
WITH THE PERMISSION OF THE  
CONTROLLER OF HMSO © CROWN.  
UNAUTHORISED REPRODUCTION  
INFRINGEMENTS © CROWN AND MAY LEAD TO  
PROSECUTION OR CIVIL PROCEEDINGS.  
HCC LICENCE No.100019180 DATE (03.09.20)

FELICITY ROE,  
DIRECTOR OF CULTURE, COMMUNITIES  
AND BUSINESS SERVICES, WINCHESTER